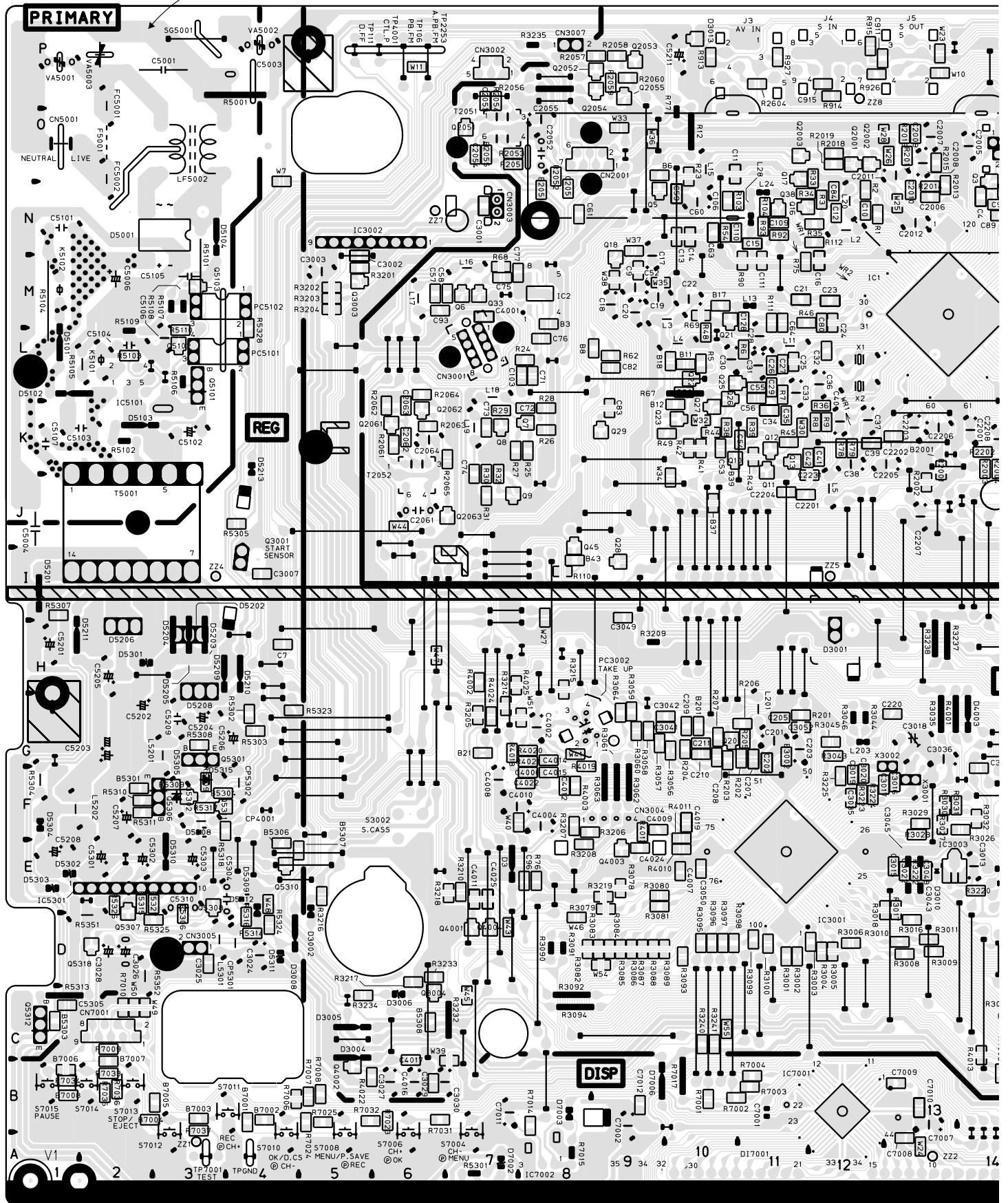


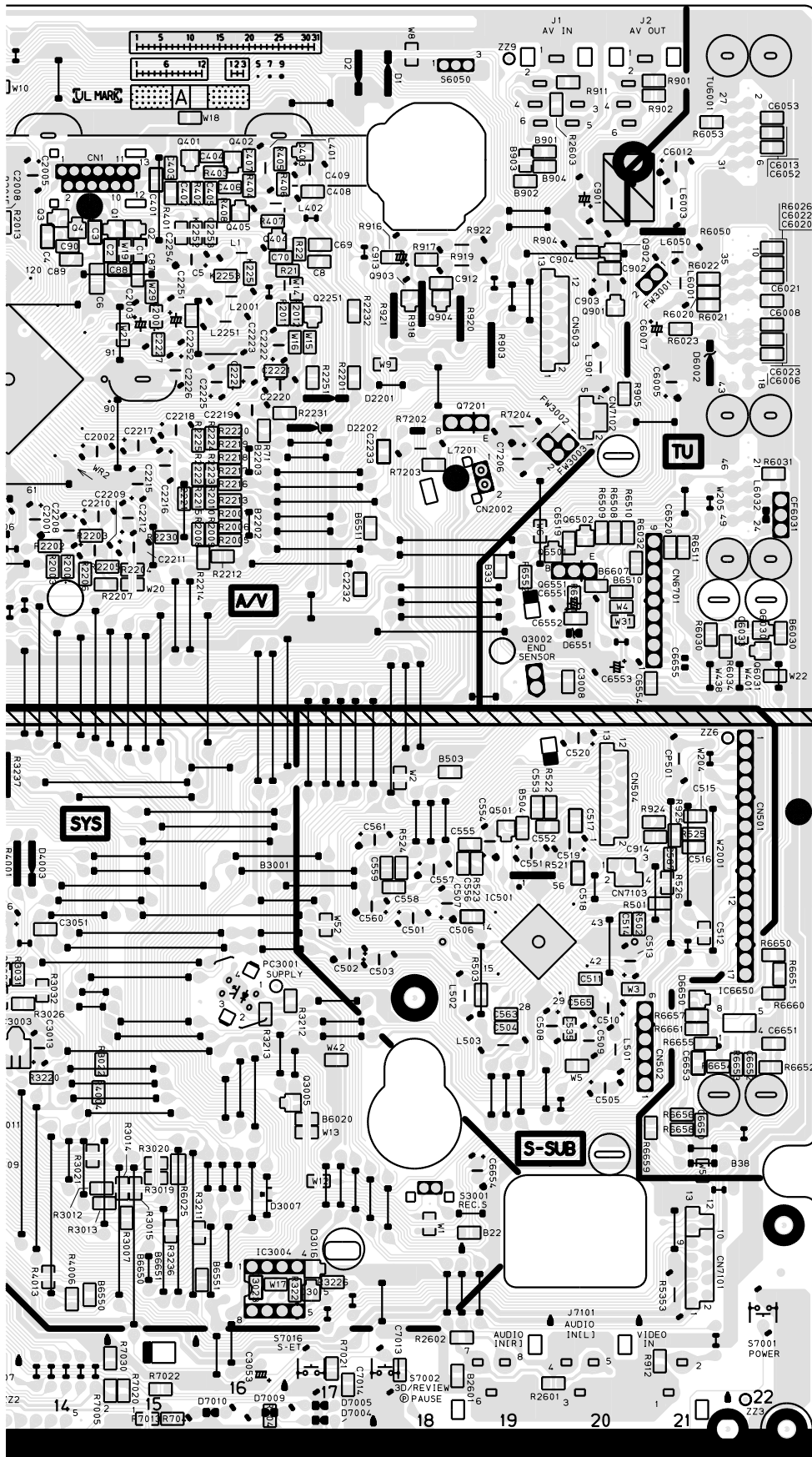


4.1 MAIN, A/C HEAD, S JACK, R.PAUSE, SHUTTLE, LT.BATTELY AND LOADING MOTOR CIRCUIT BOARDS

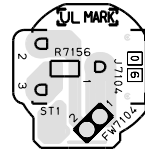
<03>MAIN  
LPB10089-001C

**DANGEROUS VOLTAGE**

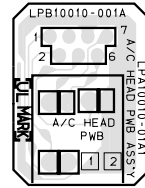




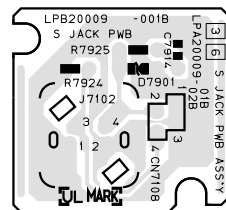
<06>R.PAUSE  
LPB10089-001C



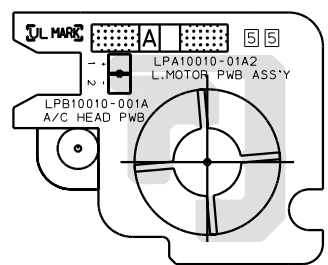
<12>A/C HEAD  
LPB10010-001A



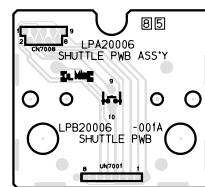
<36>S-JACK  
LPB20009-001B



<55>LOADING MOTOR  
LPB10010-001A



<85>SHUTTLE  
LPB20006-001A



<93>LT.BATTERY  
LPB10089-001C

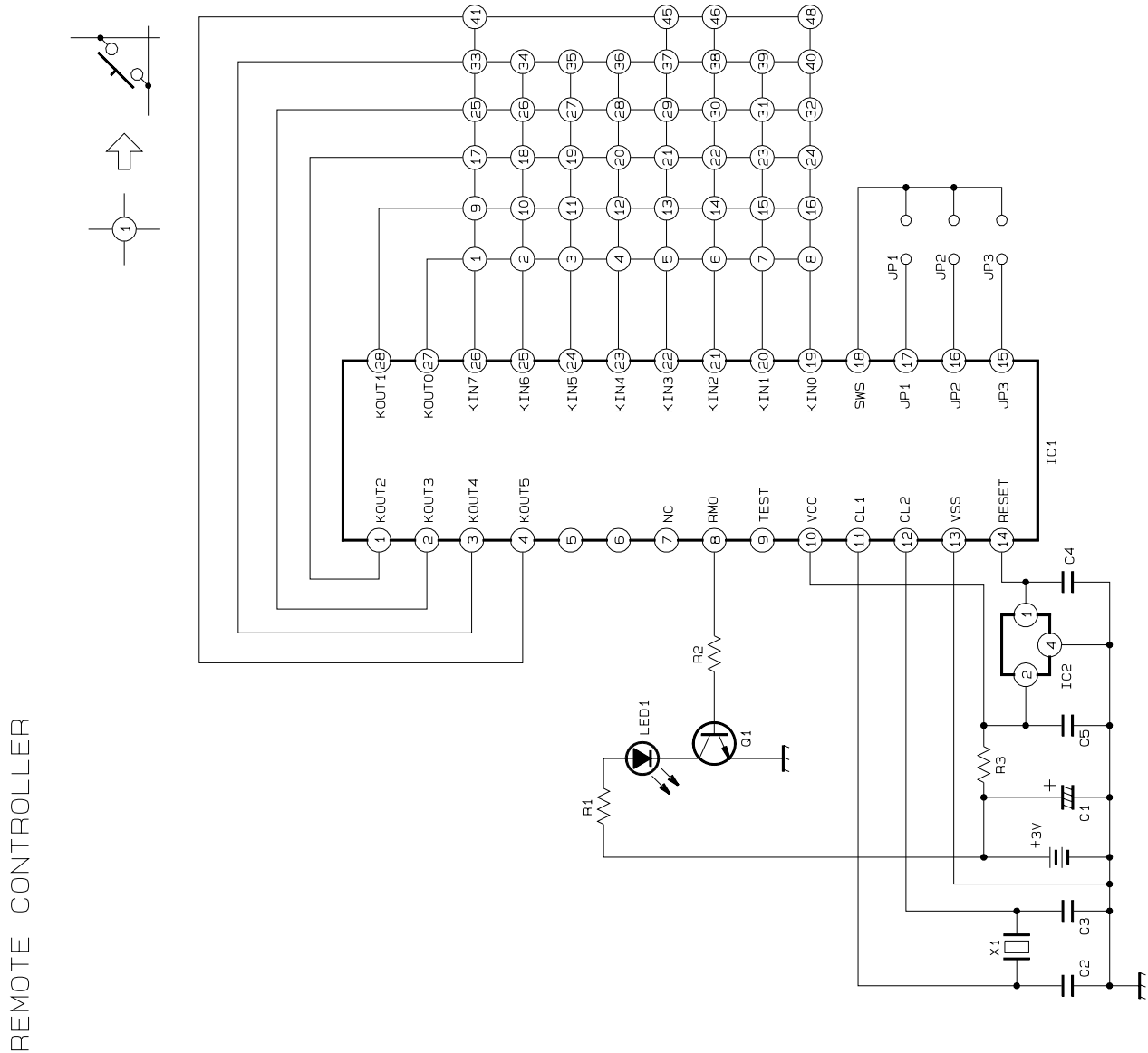


## 4.2 REMOTE CONTROL SCHEMATIC DIAGRAM

NOTES:

1. All parts shown in this schematic are critical for safety.
  2. This schematic is only for reference.
- Avoid replacing individual parts.  
Replace the entire unit only.

Key No.	Key Name
1	START+
2	1
3	4
4	STOP+
5	DATE+
6	PROG(CH)+
7	3
8	6
9	CANCEL
10	2
11	7
12	0
13	8
14	TIMER
15	5
16	9
17	PROG
18	TV
19	VCR
20	PROG CHECK
21	/-
22	SKIP
23	OPERATE
24	CABLE/SAT
25	START-
26	TV/VCR
27	RE-VIEW
28	STOP-
29	DATE-
30	PROG(CH)-
31	DISPLAY
32	AUDIO/MUTE
33	MENU
34	REC
35	REW
36	PLAY
37	STOP
38	FF
39	PAUSE
40	OK/ENTER
41	</TV VOL-
45	▲ /TV PROG+
46	▼ /TV PROG-
48	>>/TV VOL+
34+36	REC+PLAY
34+39	REC+PAUSE



REMOTE CONTROLLER